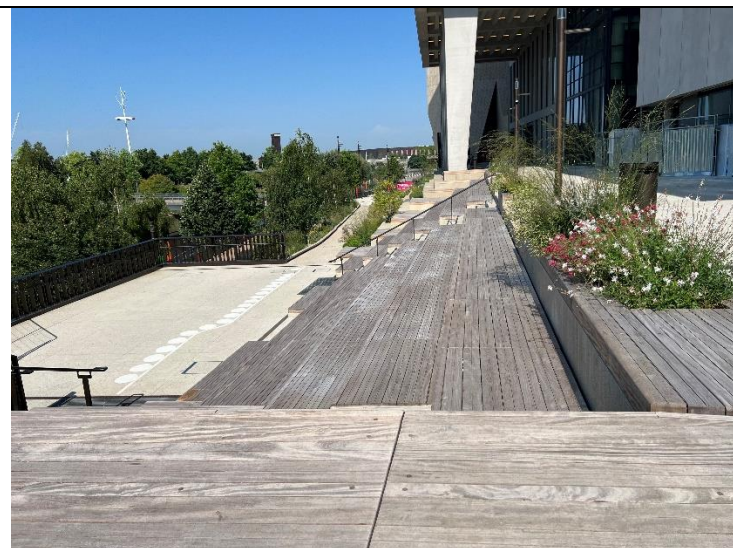


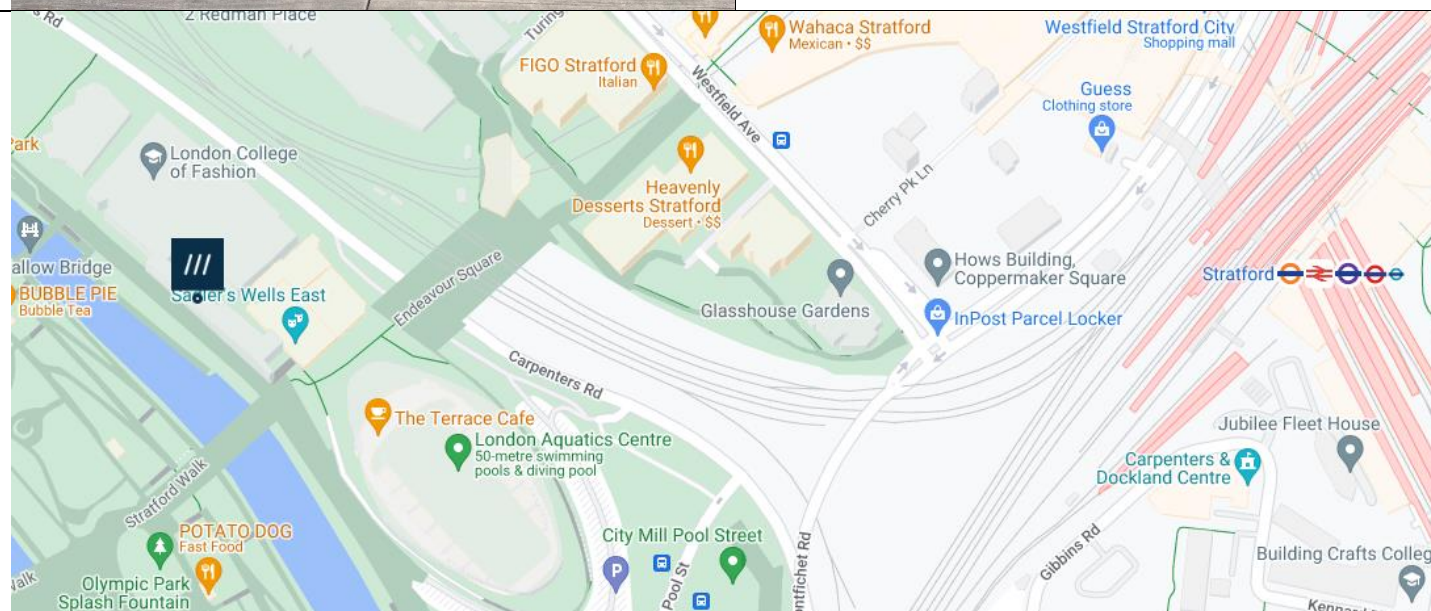
Patois and Imole, Dancing City- Eastbank Waterfront

Route from Stratford Station, Montfichet Road (Westfield Exit)



Address:
Queen Elizabeth Olympic Park,
East Bank Waterfront,
E20 2AQ

what3words.com/pack.like.goods



Transport
Stratford Station and Bus Station



Plan Your Journey:
Visit www.tfl.gov.uk

Route from Stratford Station, Montfichet Road (Westfield Exit)



Exit Stratford Station onto Montfichet Road (Westfield Exit)



Use the lift, stairs or escalators opposite the station exit to get to level 1.





Turn into Westfield shopping center and walk past M&S on your left.



Continue down the covered avenue of shops.



Exit the covered area and turn left past the restaurants and covered seating.



Cross Westfield Avenue and continue straight on.



Continue straight through Stratford Cross on Stratford Walk.



Pass the Aquatics Centre on your left on Stratford Walk.



Before the bridge that crosses the river turn right onto Eastbank Waterfront.



The site will be directly in front of you.